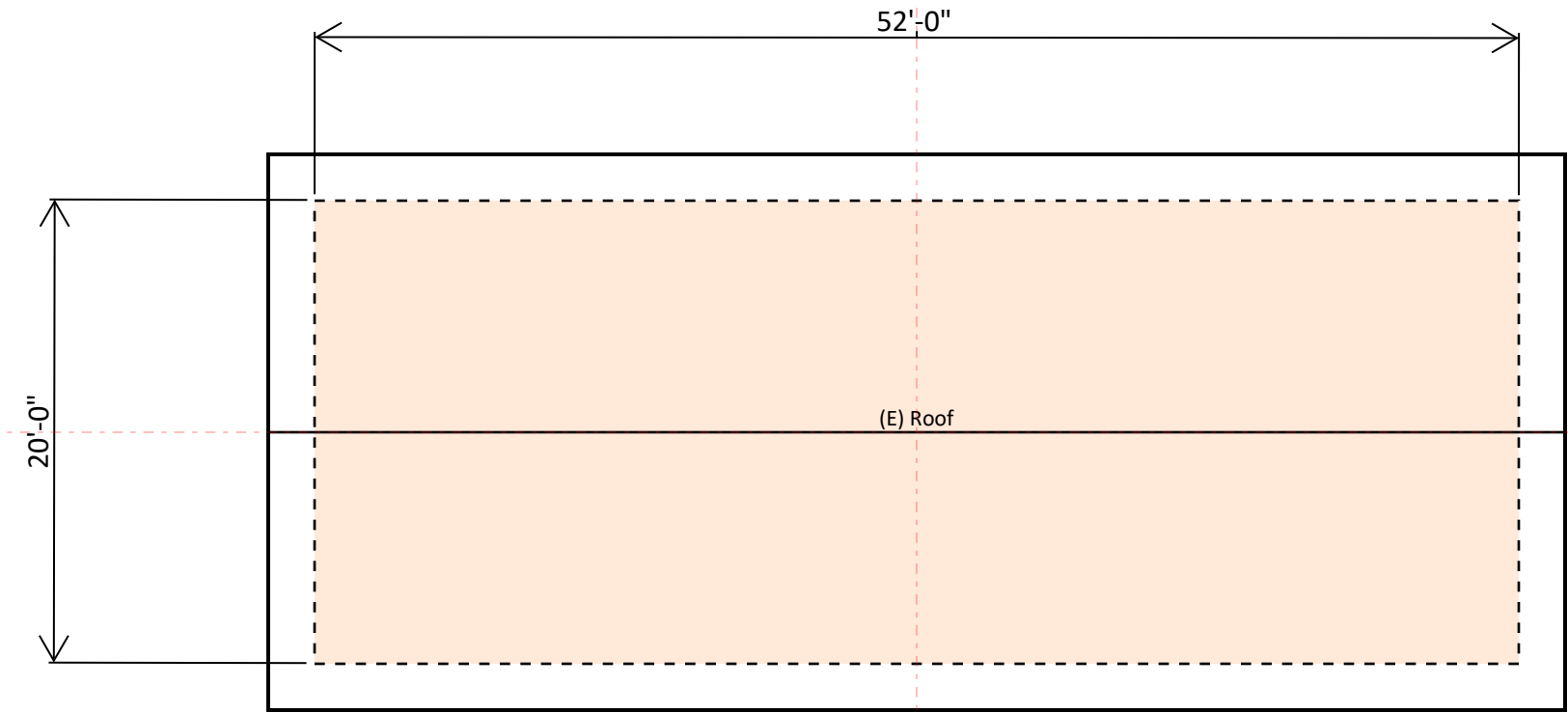


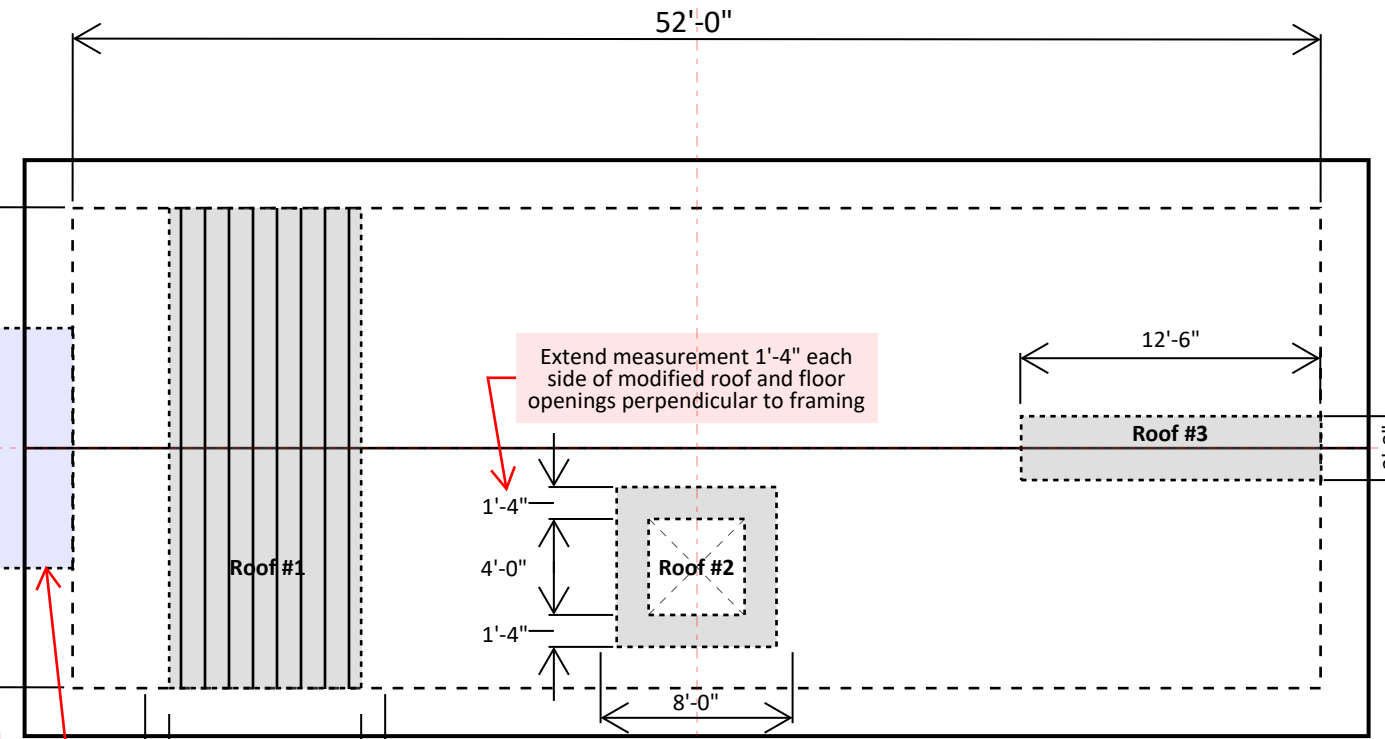
Illustrated Modification Plan Calculations



(E) Existing Roof Plan

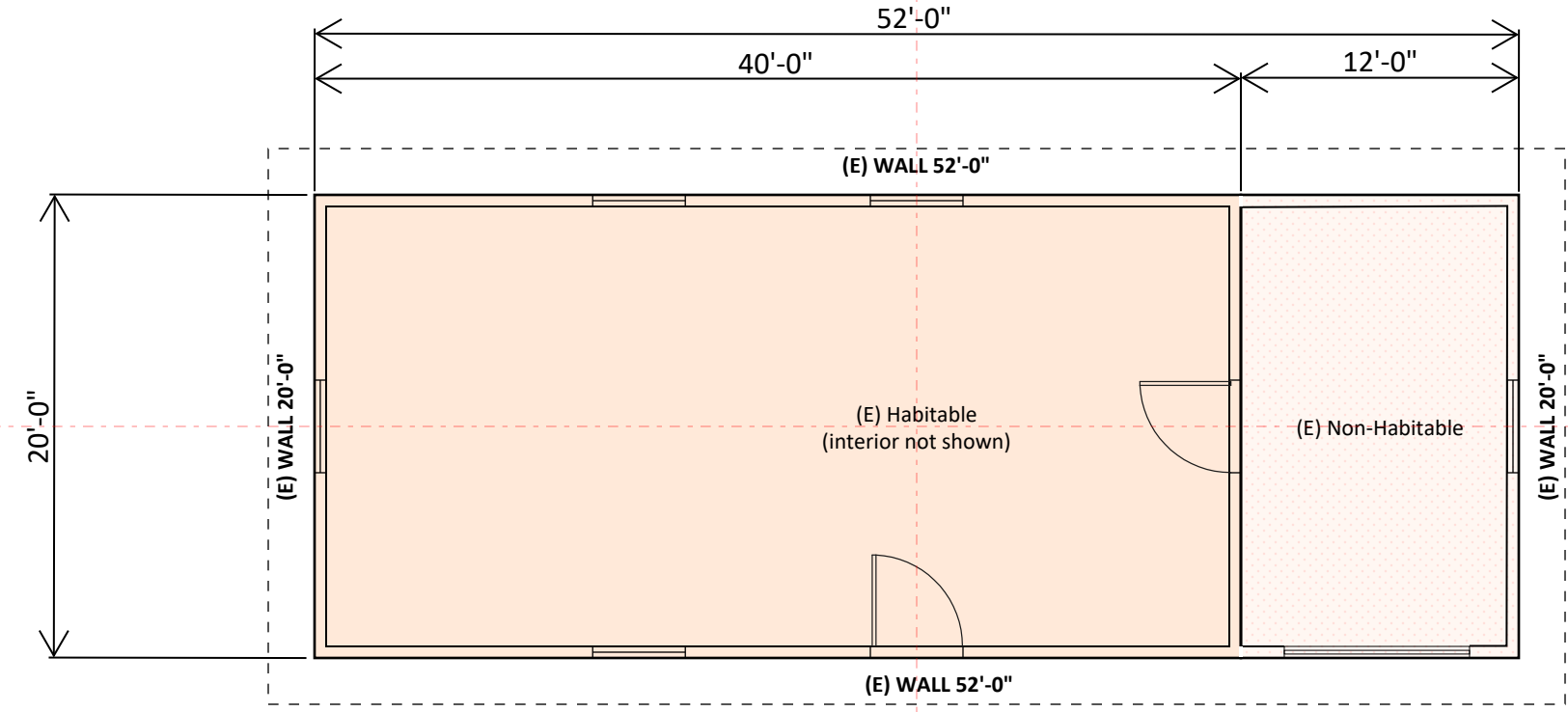
Modification Plan Sheet Submittal
A modification plan sheet is required to have a PLG-215 worksheet form along with coordinated roof, wall, floor & foundation plan diagrams.

(E) Roof
Total roof area includes sealed decks (overhangs are not calculated)



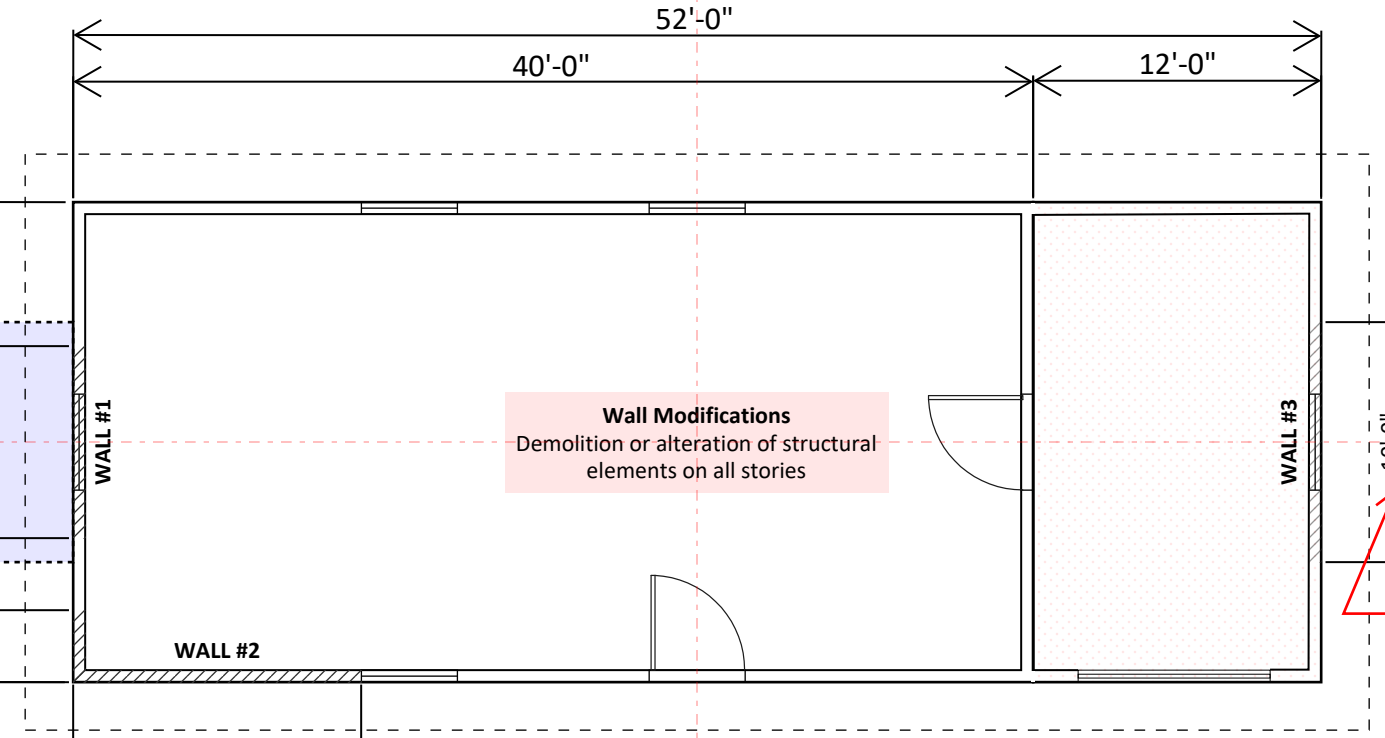
Modified Roof Area
Additions are not calculated. Location shown for context only, typ

Modified Roof Plan



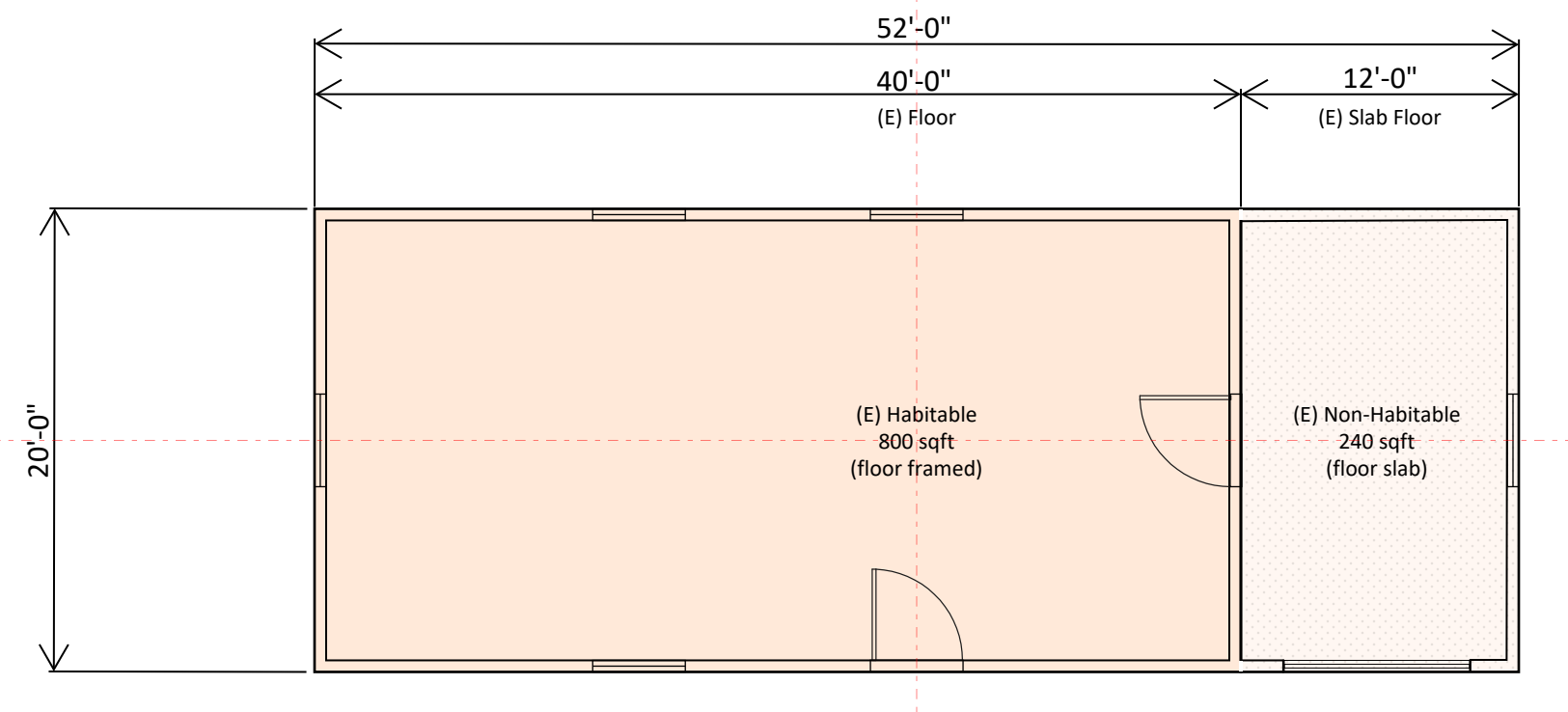
(E) Existing Wall Plan

(E) Existing Exterior Walls
Total length of exterior walls on all stories (interior walls are not calculated)



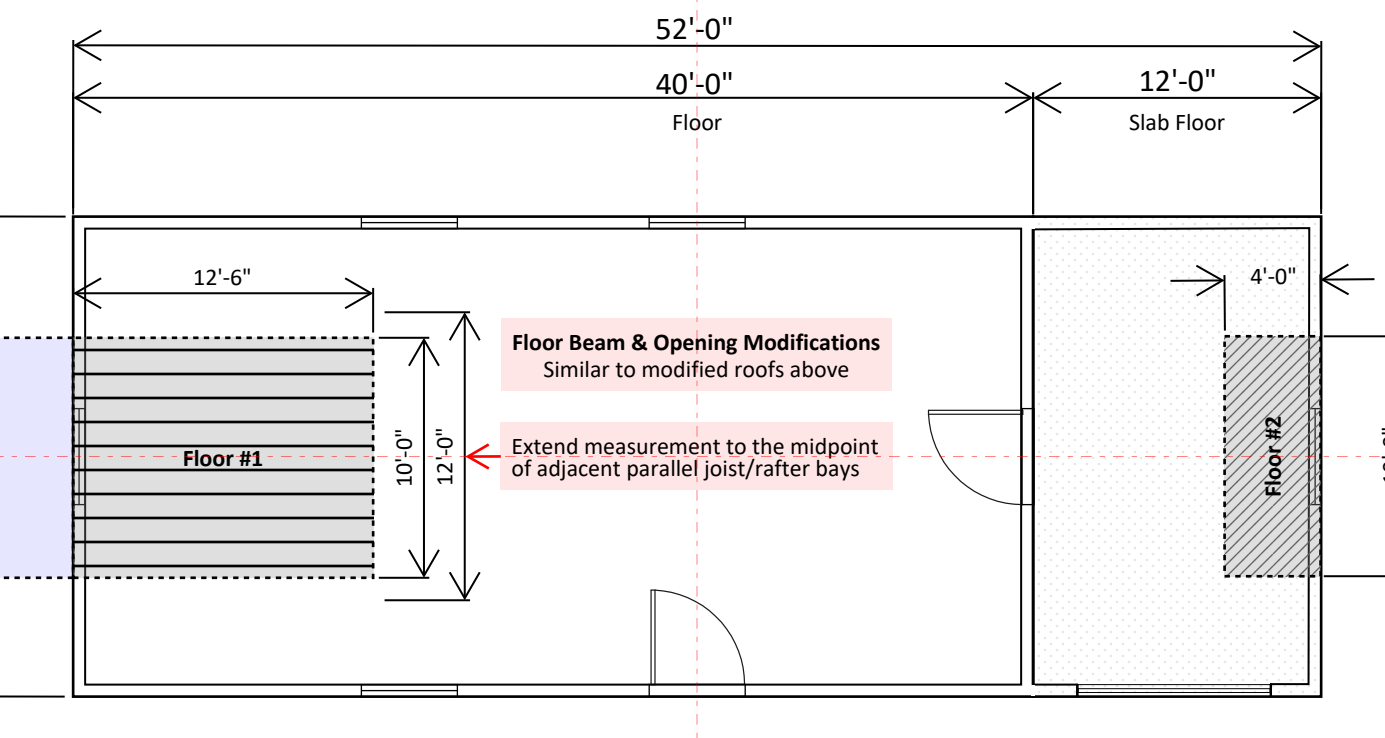
Modified Exterior Walls
Walls segments are rounded up to 4 foot increments by the worksheet

Modified Wall Plan



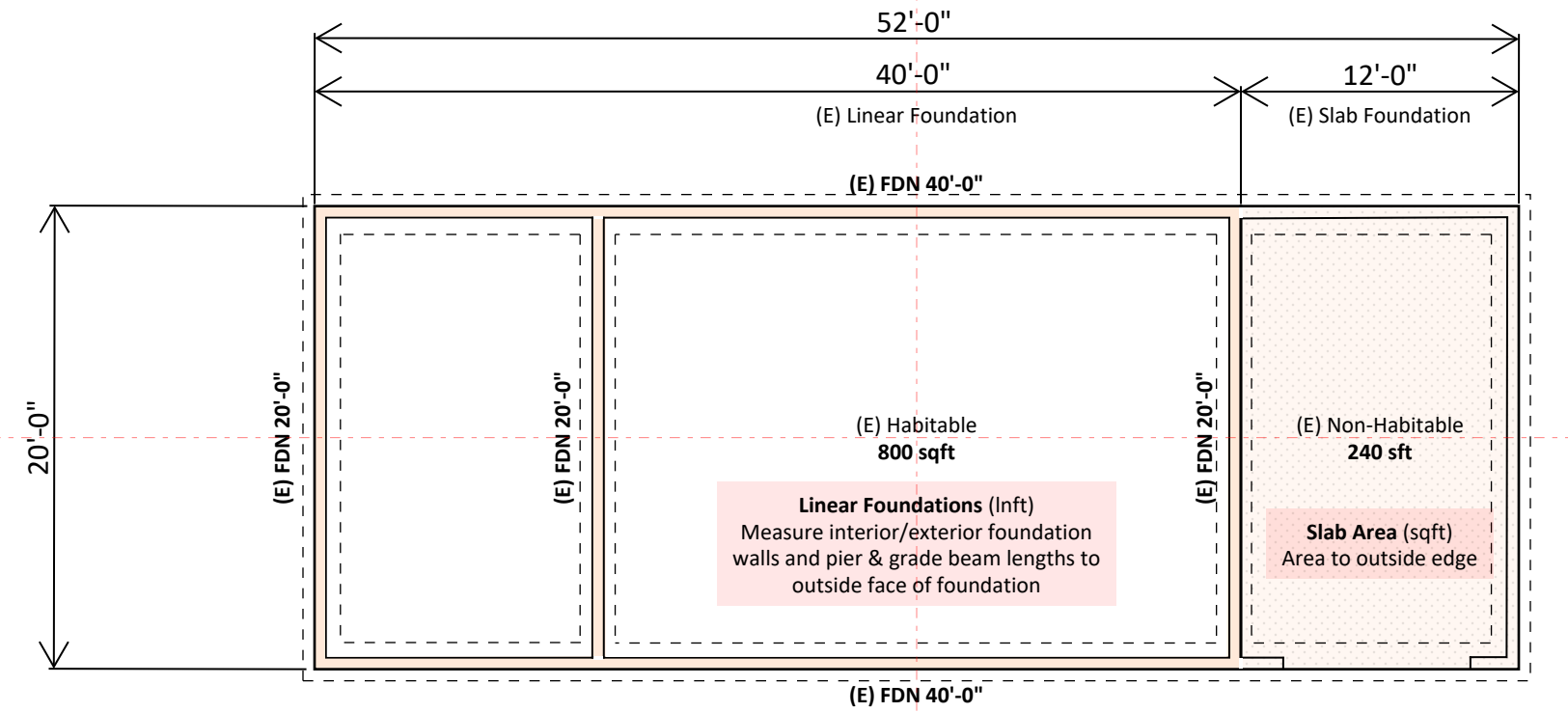
(E) Existing Floor Plan

(E) Existing Floors
Total floor area all stories habitable & non-habitable area



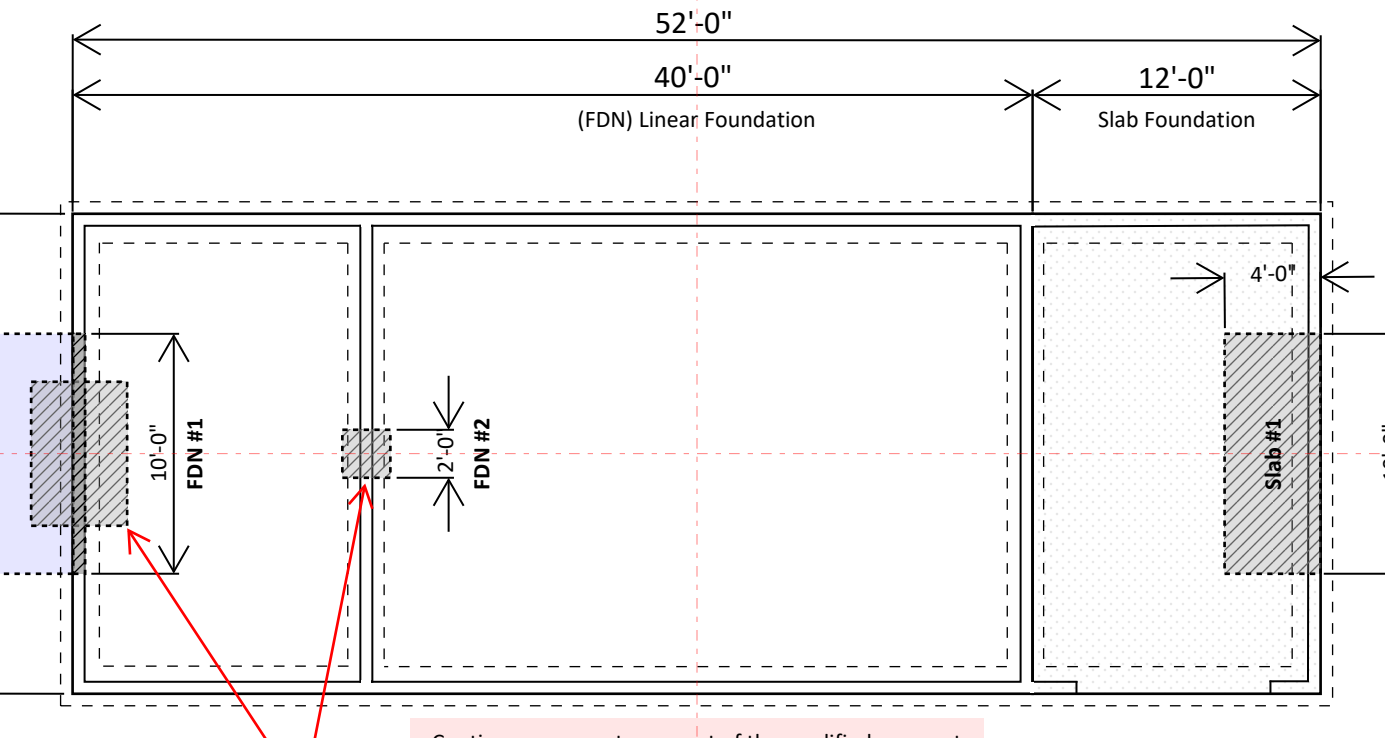
Modified Floors
Slab areas must be entered as both floors & foundations in the worksheet

Modified Floor Area



(E) Existing Foundation Plan

(E) Existing Supported Floor
Linear FDN Supported Floor: 800 sqft
Slab Area Supported Floor: 240 sqft



Modified Foundations
Slab areas must be entered as both floors & foundations in the worksheet

Modified Foundation Plan

Illustrated Modification Worksheet | PLG-215

County of Santa Cruz
Community Development & Infrastructure
Modification Worksheet Form PLG-215
1 of 1
REV 11/25/2024



A. Modification Summary (factored part B)
The CDI website has explanations, instructions and examples. QR code below.
Table with 2 columns: Element Type, Modified (SF). Rows include Roof (15%), Exterior Wall (65%), Floor (10%), and Foundation (10%). Total: 23.31.

B. Modified Element ('existing' is the total existing SF or LF of the element)
Table with 4 columns: Element Type, Modified (%), Existing (SF), Modified (SF). Rows include Floor (framed, slab), Roof, Exterior Wall, Foundation, and Exterior Wall. Total: 190 / 287.

Table with 4 columns: Element Type, Modified (%), Existing (LF), Modified (LF). Rows include Floor, Slab, and Subtotal. Total: 13 / 40.

Table with 2 columns: Element Type, Modified (SF). Rows include Slab, Foundation, and Subtotal. Total: 40 / 36.

701 Ocean Street 4th Floor, Santa Cruz, CA 95060 | www.cdi.santacruzcountyca.gov

Santa Cruz County
Community Development & Infrastructure
701 Ocean Street 4th Floor
Santa Cruz, CA 95060
Planning (831) 454-2580
Public Works (831) 454-2160
CDI Website www.cdi.santacruzcountyca.gov



These illustrations are a visual aid for use with the CDI website explanations, instructions, and examples. The above PLG-215 form QR code opens to Modification Evaluation information.

Modification Calculation Illustrations Form

IB-215

REV 11/25/2024